



**ROE RICE & DUCK FARM**  
**ROE, ARKANSAS**  
**MONROE COUNTY, ARKANSAS**  
**371.45+/- ACRES**  
**\$2,550,000**

**PRESENTED BY**



**Marc Holmes – Principal Broker**  
**10457 Gray Hills Dr. Fort Worth, TX 75033**  
**214-444-9697 (office) 501-269-696 (cell)**  
**[www.holmes-realestate.com](http://www.holmes-realestate.com)**

# ROE RICE & DUCK FARM

## OVERVIEW: A Rare Turnkey Row-Crop Farm with World-Class Waterfowl Hunting

Roe, Arkansas | \$2,550,000 | 371.45± Total Surveyed Acres

This is an exceptional opportunity to own a highly productive farm in the heart of Arkansas's legendary waterfowl flyway. The offering consists of two tracts just minutes apart:

- **Main Tract** – 332.9± surveyed acres along the Prairie/Monroe County line, directly bordering the renowned Wingmead (one of the most intensely managed waterfowl properties in the Delta).
- **East Tract** – 38.55± surveyed acres located in Prairie County approximately 3 miles east with an outstanding duck hole and additional deer hunting potential.

Both tracts sit only minutes from the White River National Wildlife Refuge – placing them squarely in one of the top waterfowl corridors in the country.

### Key Features & Improvements

- 371.45± total surveyed acres.
- Approximately 365± FSA cropland acres (reconstitute of the Main Tract will be completed before closing).
- Proven rice/soybean rotation (occasional corn) with strong historical yields: – Rice: ~190 bu/acre averages – Soybeans: ~60 bu/acre averages.
- Precision-leveled fields with excellent soils.
- 5 irrigation wells + 2 relift pumps.
- 2 tailwater recovery pits.
- Extensive underground poly pipe system.
- Multiple water-control structures.
- 

### Premier Waterfowl Setup

- 8 managed duck holes that can be artificially flooded on demand.
- 2 permanent pit blinds + 4 skid blinds.
- Proven history of outstanding duck hunting in one of the most intensely managed areas in the Delta.

The farm is currently leased to an excellent tenant on a favorable 75/25 crop-share basis, providing immediate cash flow and hassle-free management.

Whether you're looking for a top-tier agricultural investment, a legacy waterfowl property, or the ultimate combination of both, this turnkey operation delivers on every level.

Contact **Marc Holmes** at **(501) 269-6963** or **marc@holmes-realestate.com** for more information. Private showings by appointment only.

### Disclaimer Statement

**Any/all information provided by Holmes Real Estate is intended for reference only and it's accuracy is not guaranteed. This listing is subject to errors, omissions or change without notice.**

# ROE RICE & DUCK FARM

## OVERVIEW (CONTINUED)

**LOCATION/ACCESS:** Approximately 3 miles northwest of Roe, AR.

**OFFERING PRICE:** The offering price for this property is \$2,550,000.

## INTERACTIVE MAP



### Disclaimer Statement

Any/all information provided by Holmes Real Estate is intended for reference only and it's accuracy is not guaranteed. This listing is subject to errors, omissions or change without notice.

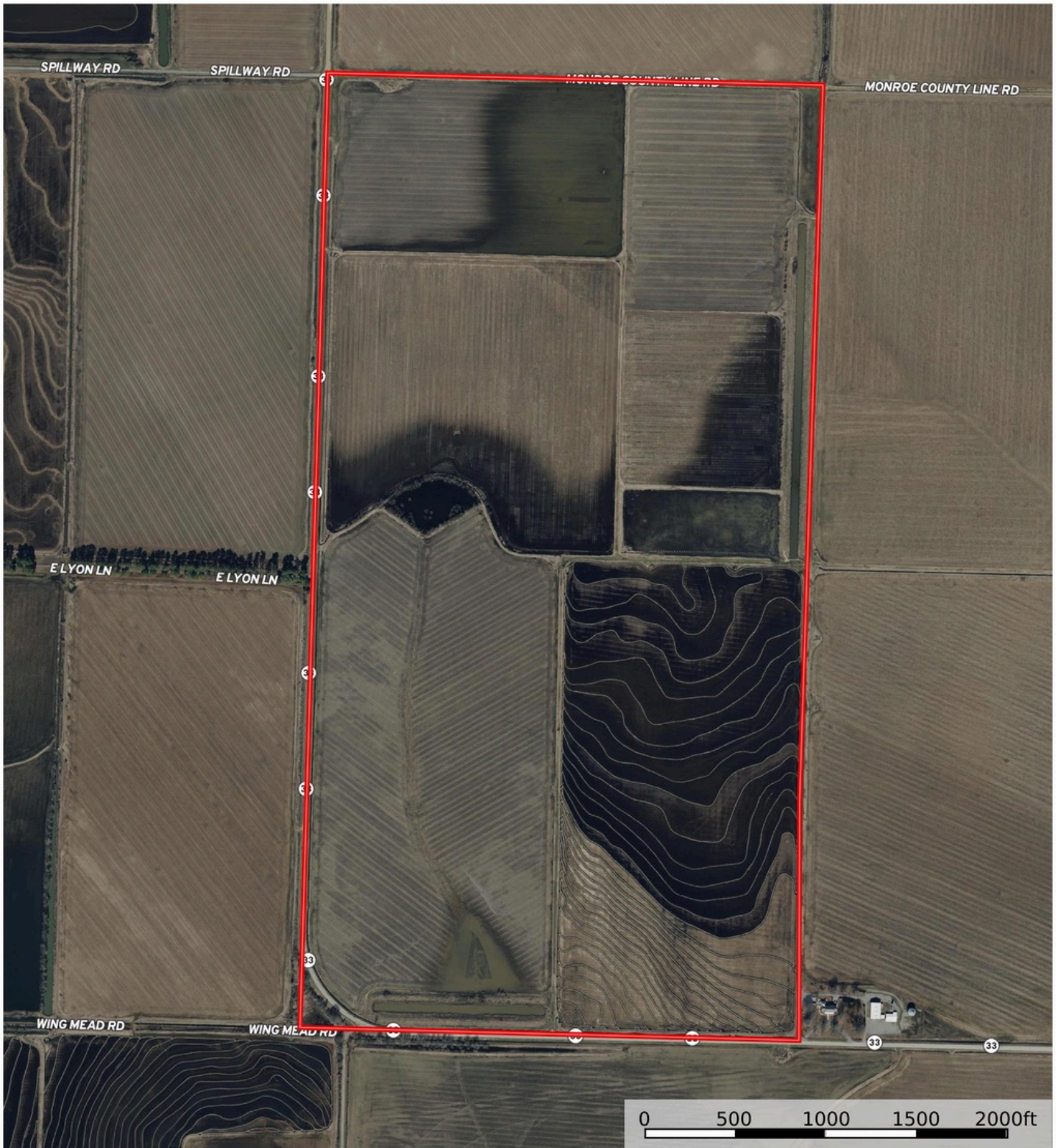


# AERIAL MAP (MAIN TRACT)

## TURNKEY RICE & DUCK FARM

Monroe County, Prairie County, Arkansas, 371.45 AC +/-

HOLMES  
REAL ESTATE




 Boundary

Marc Holmes  
P: 501-438-9757

[www.holmes-realestate.com](http://www.holmes-realestate.com)

2770 Main St. Ste 288, Frisco, TX 75033

 The information contained herein was obtained from sources deemed to be reliable. Land id™ Services makes no warranties or guarantees as to the completeness or accuracy thereof.



# AERIAL MAP (MAIN TRACT)

## TURNKEY RICE & DUCK FARM

Monroe County, Prairie County, Arkansas, 371.45 AC +/-

HOLMES  
REAL ESTATE



Boundary

Marc Holmes  
P: 501-438-9757

[www.holmes-realestate.com](http://www.holmes-realestate.com)

2770 Main St. Ste 288, Frisco, TX 75033

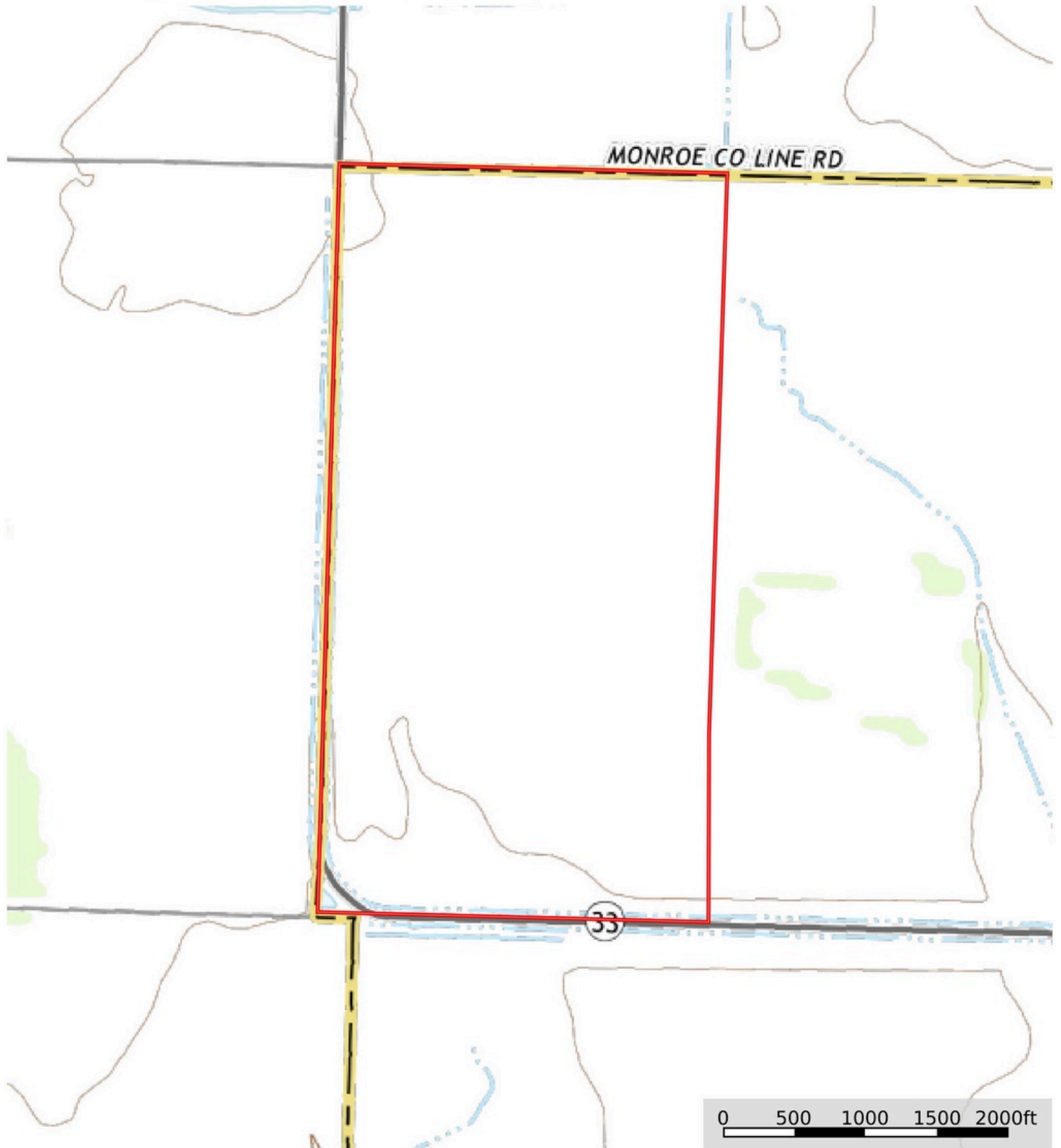
The information contained herein was obtained from sources deemed to be reliable. Land id™ Services makes no warranties or guarantees as to the completeness or accuracy thereof.

# TOPO MAP (MAIN TRACT)

## TURNKEY RICE & DUCK FARM

Monroe County, Prairie County, Arkansas, 371.45 AC +/-

HOLMES  
REAL ESTATE




 Boundary

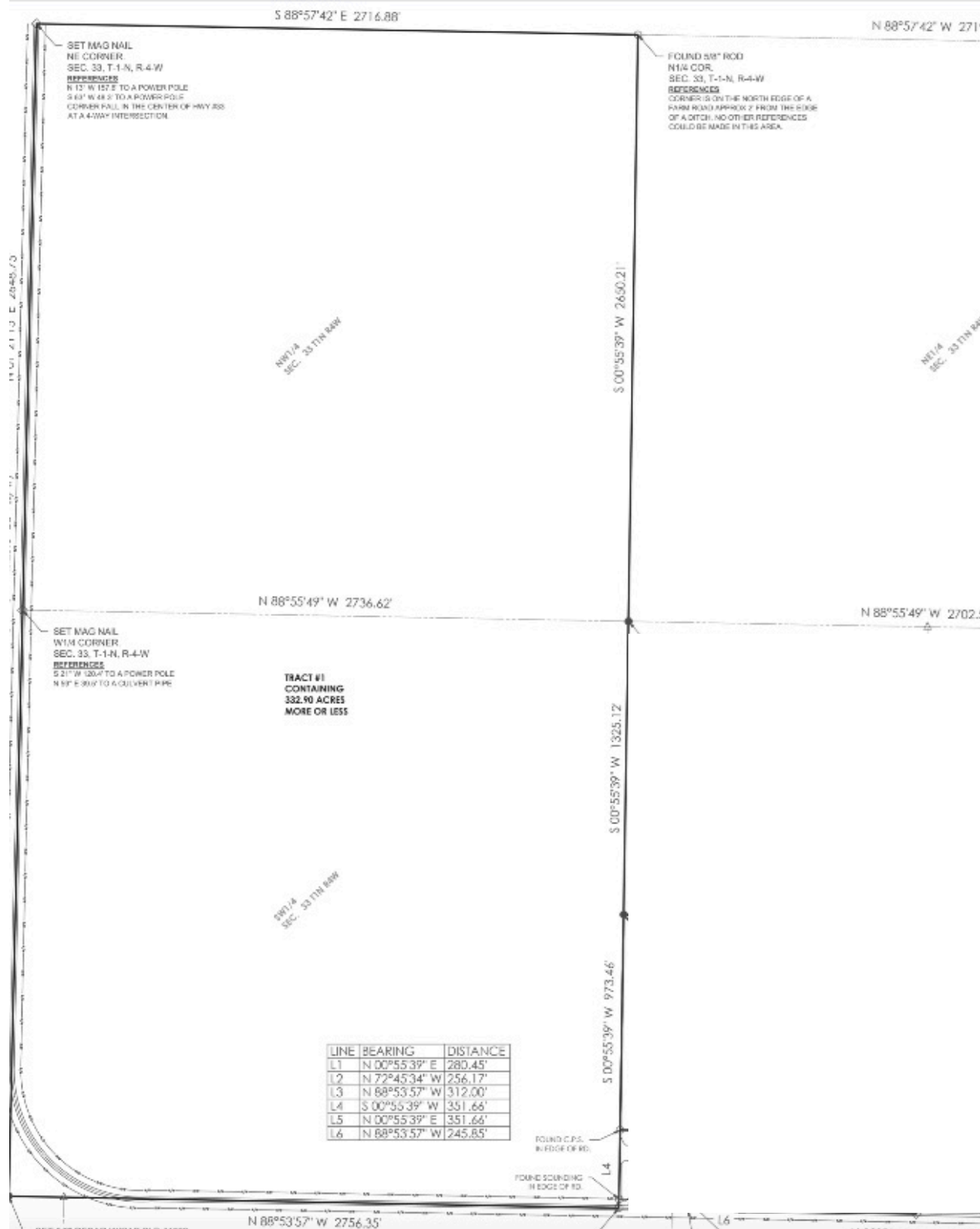
Marc Holmes  
P: 501-438-9757

[www.holmes-realestate.com](http://www.holmes-realestate.com)

2770 Main St. Ste 288, Frisco, TX 75033

 The information contained herein was obtained from sources deemed to be reliable. Land id™ Services makes no warranties or guarantees as to the completeness or accuracy thereof.

# SURVEY (MAIN TRACT)





# FSA 156 (MAINTRACT)

Arkansas

Monroe

Report ID: FSA-156EZ

U.S. Department of Agriculture

Farm Service Agency

Abbreviated 156 Farm Record

FARM: 3539

Prepared: 5/10/18 9:30 AM

Crop Year: 2018

Page: 1 of 2

DISCLAIMER: This is data extracted from the web farm database. Because of potential messaging failures in MIDAS, this data is not guaranteed to be an accurate and complete representation of data contained in the MIDAS system, which is the system of record for Farm Records.

Operator Name					Farm Identifier		Recon Number	
NICHOLAS GRAY								
Farms Associated with Operator:								
3116, 3540								
CRP Contract Number(s): None								
Farmland	Cropland	DCP Cropland	WBP	WRP/EWP	CRP Cropland	GRP	Farm Status	Number of Tracts
370.88	365.0	365.0	0.0	0.0	0.0	0.0	Active	2
State Conservation	Other Conservation	Effective DCP Cropland	Double Cropped	MPL/FPW				
0.0	0.0	365.0	119.05	0.0				

ARC/PLC				
ARC-IC	ARC-CO		PLC	PLC-Default
NONE	WHEAT, SOYBN		RICE-LGR, RICE-MGR	NONE
Crop	Base Acreage	CTAP Tran Yield	PLC Yield	CCC-505 CRP Reduction
WHEAT	133.58		38	0.0
RICE-LONG GRAIN	152.51		4549	0.0
SOYBEANS	172.48		30	0.0
RICE-MED GRAIN	14.43		4543	0.0
Total Base Acres:	473.0			

Tract Number: 7 Description: A13-1A

BIA Range Unit Number:

HEL Status: NHEL: no agricultural commodity planted on undetermined fields

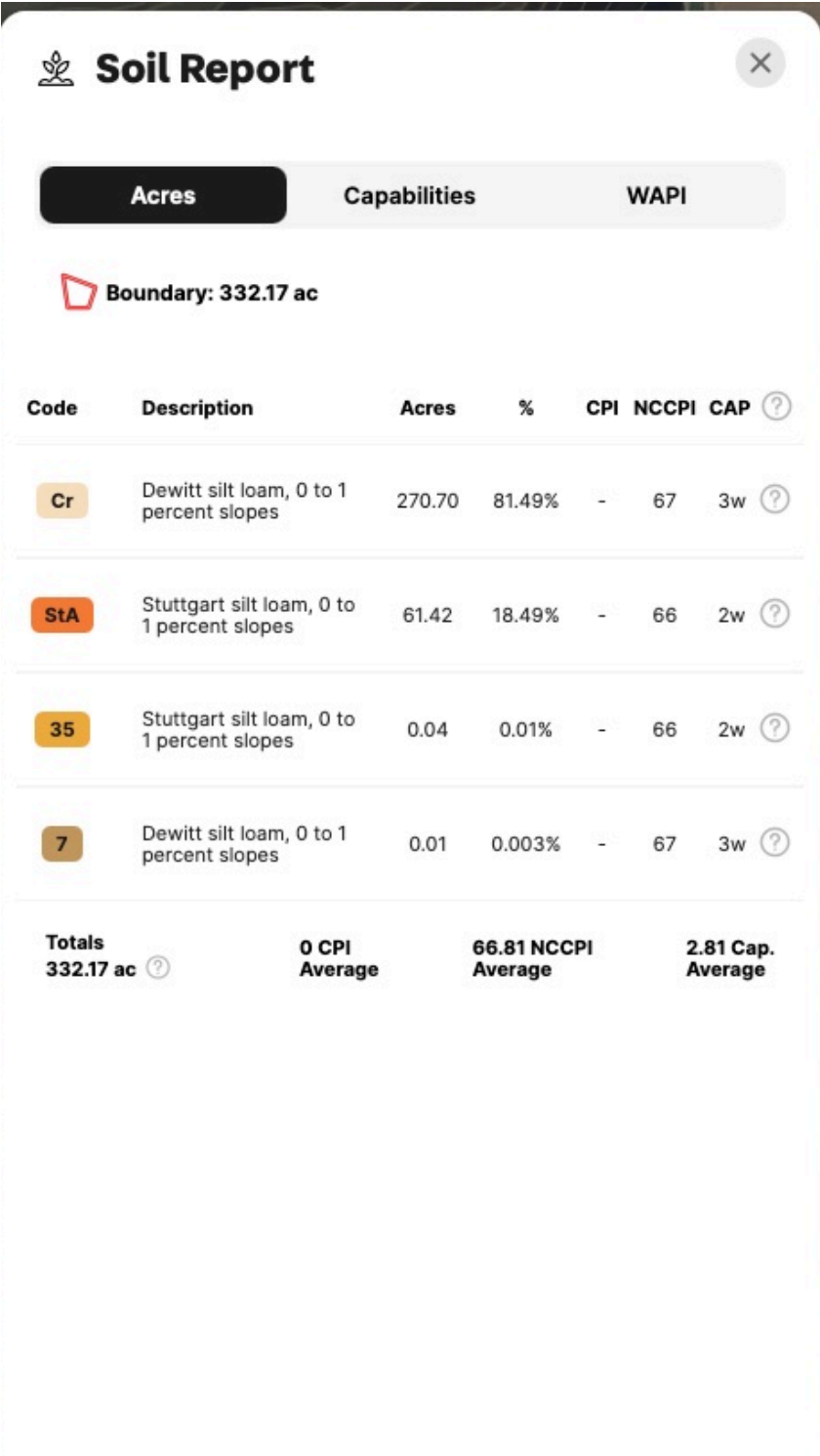
Wetland Status: Wetland determinations not complete

WL Violations: None

Farmland	Cropland	DCP Cropland	WBP	WRP/EWP	CRP Cropland	GRP
251.12	245.24	245.24	0.0	0.0	0.0	0.0
State Conservation	Other Conservation	Effective DCP Cropland	Double Cropped	MPL/FWP		
0.0	0.0	245.24	80.0	0.0		
Crop	Base Acreage	CTAP Tran Yield	PLC Yield	CCC-505 CRP Reduction		
WHEAT	89.8		38	0.0		
RICE-LONG GRAIN	102.5		4549	0.0		
RICE-MED GRAIN	9.7		4543	0.0		
SOYBEANS	115.9		30	0.0		
Total Base Acres:	317.9					

Owners: MCFADIN HOLDINGS LLC

# SOIL MAP (MAINTRACT)





# AERIAL MAP (EAST TRACT)

## TURNKEY RICE & DUCK FARM

Monroe County, Prairie County, Arkansas, 371.45 AC +/-

HOLMES  
REAL ESTATE




 Boundary

Marc Holmes  
P: 501-438-9757

[www.holmes-realestate.com](http://www.holmes-realestate.com)

2770 Main St. Ste 288, Frisco, TX 75033

 The information contained herein was obtained from sources deemed to be reliable. Land id™ Services makes no warranties or guarantees as to the completeness or accuracy thereof.



# AERIAL MAP (EAST TRACT)

## TURNKEY RICE & DUCK FARM

Monroe County, Prairie County, Arkansas, 371.45 AC +/-

HOLMES  
REAL ESTATE



Boundary

Marc Holmes  
P: 501-438-9757

[www.holmes-realestate.com](http://www.holmes-realestate.com)

2770 Main St. Ste 288, Frisco, TX 75033

The information contained herein was obtained from sources deemed to be reliable. Land id™ Services makes no warranties or guarantees as to the completeness or accuracy thereof.

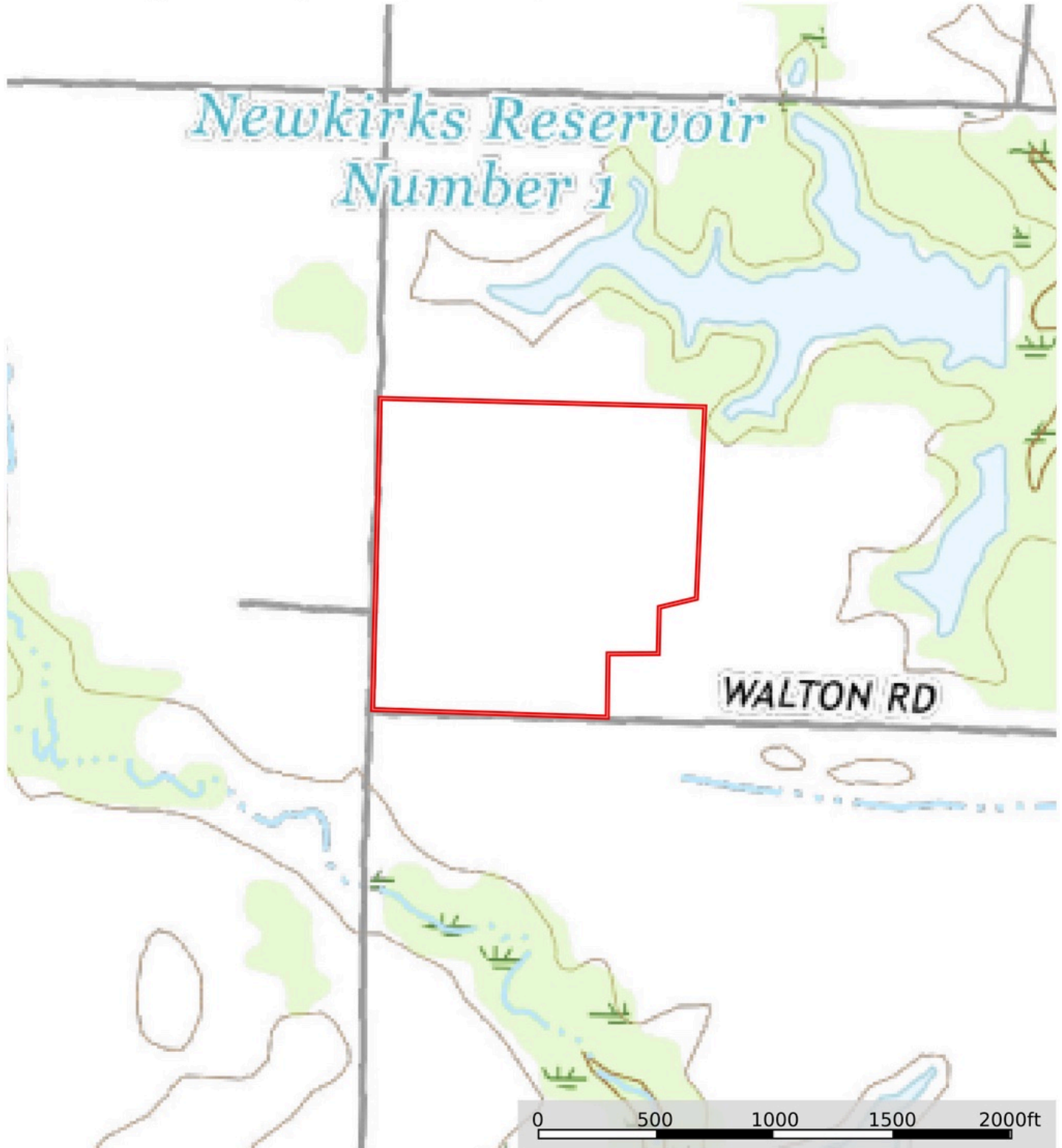


# TOPO MAP (EAST TRACT)

## TURNKEY RICE & DUCK FARM

Monroe County, Prairie County, Arkansas, 371.45 AC +/-

HOLMES  
REAL ESTATE




 Boundary

Marc Holmes  
P: 501-438-9757

[www.holmes-realestate.com](http://www.holmes-realestate.com)

2770 Main St. Ste 288, Frisco, TX 75033

 The information contained herein was obtained from sources deemed to be reliable. Land id™ Services makes no warranties or guarantees as to the completeness or accuracy thereof.

**GRAPHIC SCALE - FEET**

400 0 400 800 1200

**LEGEND**

- ◁ = EXISTING 1/2" ROD OR AS NOTED
- = SET 1/2" ROD
- = EXISTING "X-TIE"

**EXISTING GRAVEL COUNTY ROAD**

S 88°17'32"E 2711.1'

1358.9'

EXIST. 1/2" ROD OVER AXLE

1312.8'

22 23

27 26

EXISTING GRAVEL COUNTY ROAD

N 01°45'25"E 1331.5'

S 88°58'36"E 1359.6'

N 88°17'39"W 1360.2'

**PART OF THE SW 1/4-NW 1/4**

**38.86 ACRES**

**SUBJECT TO ROAD R/N'S**

S 76°12'18"W 161.6'

S 00°58'47"W 197.0'

S 89°22'06"W 212.3'

S 00°28'47"W 268.0'

827.2'

S 02°10'30"W 1342.5'

3.25 AC.

EXIST. "X-TIE" 24.6' N.

369.9'

994.3'

N 88°30'43"W

1364.2'

1296.5'

1337.4'

EXIST. "X-TIE" 33' W. OF CORNER

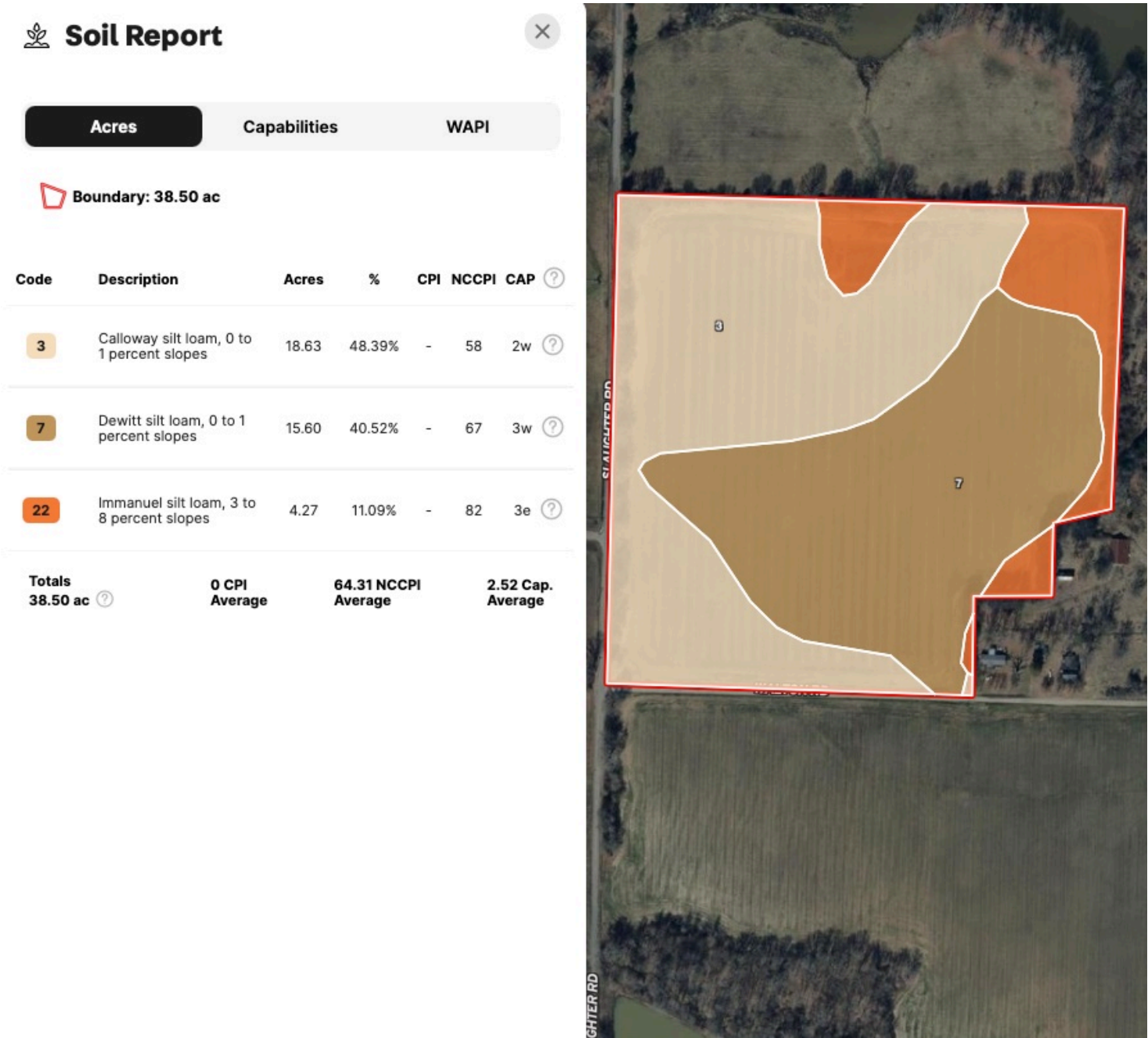
**EXISTING GRAVEL COUNTY ROAD**

**SE 1/4-NW 1/4**

**41.9 ACRES**



# SOIL MAP (EAST TRACT)



# FSA 156 (EAST TRACT)

ARKANSAS  
PRAIRIE

Form: FSA-156EZ

See Page 2 for non-discriminatory Statements.



United States Department of Agriculture  
Farm Service Agency

## Abbreviated 156 Farm Record

FARM : 2019

Prepared : Apr 2, 2019

Crop Year : 2019

Operator Name :  
Farms Associated with Operator :  
CRP Contract Number(s) :  
Recon ID :

### Farm Land Data

Farmland	Cropland	DCP Cropland	WBP	WRP	CRP	GRP	Sugarcane	Farm Status	Number Of Tracts
81.07	66.50	66.50	0.00	0.00	0.00	0.00	0.00	Active	1
State Conservation	Other Conservation	Effective DCP Cropland	Double Cropped		MPL	Acre Election	EWP	DCP Ag.Rel. Activity	Broken From Native Sod
0.00	0.00	66.50	0.00		0.00		0.00	0.00	0.00

### Crop Election Choice

ARC Individual	ARC County	Price Loss Coverage
None	SOYBN	RICE-MGR

### DCP Crop Data

Crop Name	Base Acres	CCC-505 CRP Reduction Acres	CTAP Yield	PLC Yield	HIP
Soybeans	20.55	0.00	0	28	
Rice-Medium Grain	20.55	0.00	0	4714	
<b>TOTAL</b>	<b>41.10</b>	<b>0.00</b>			

### NOTES

Tract Number : 2695

Description : G-11/2A  
FSA Physical Location : ARKANSAS/PRAIRIE  
ANSI Physical Location : ARKANSAS/PRAIRIE  
BIA Unit Range Number :  
HEL Status : HEL field on tract.Conservation system being actively applied  
Wetland Status : Tract contains a wetland or farmed wetland  
WL Violations :  
Owners :  
Other Producers : None  
Recon ID : None

### Tract Land Data

Farm Land	Cropland	DCP Cropland	WBP	WRP	CRP	GRP	Sugarcane
81.07	66.50	66.50	0.00	0.00	0.00	0.00	0.00
State Conservation	Other Conservation	Effective DCP Cropland	Double Cropped	MPL	EWP	DCP Ag. Rel Activity	Broken From Native Sod
0.00	0.00	66.50	0.00	0.00	0.00	0.00	0.00

### DCP Crop Data

Crop Name	Base Acres	CCC-505 CRP Reduction Acres	CTAP Yield	PLC Yield
Soybeans	20.55	0.00	0	28
Rice-Medium Grain	20.55	0.00	0	4714

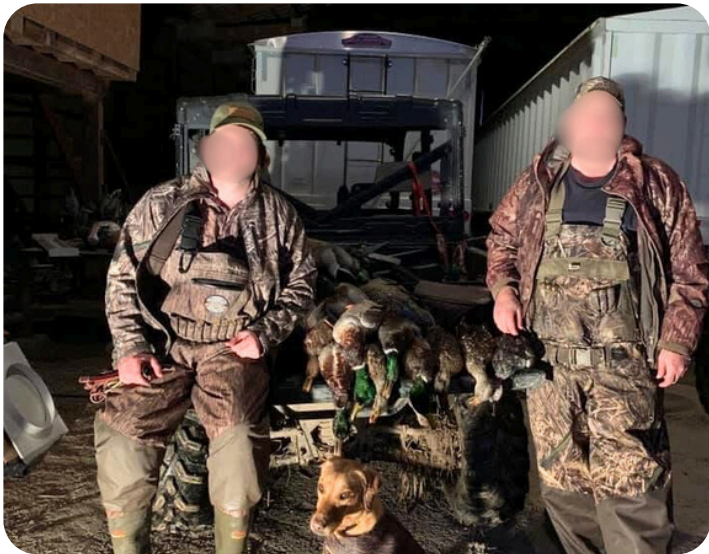


# PHOTOS





# PHOTOS





# PHOTOS





## COMMENTS & NOTES

---

---

---

---

---

---

---

---

---

---

---

---

---

---

---



The information contained herein is from sources Holmes Real Estate considers reliable, however does not guarantee the accuracy, completeness or sufficiency of this information. Holmes Real Estate does not assume, and hereby expressly disclaims any responsibility for the future operating and investment results of the property. Buyers are encouraged to inspect the property themselves and consult such experts to verify the accuracy of all information within this brochure. This offering is subject to prior sale and it may be withdrawn from the market without advance notice.